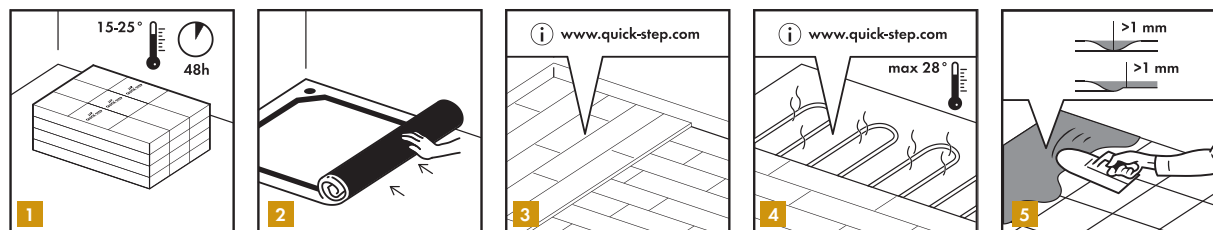


In the following text "vinyl floor(s)" refers to floors from the Quick-Step Livyn Ambient Glue⁺ and Balance Glue⁺ collections. "The branded accessories" refer to the specific Quick-Step vinyl accessories. "The website" refers to www.quick-step.com

IN ORDER TO OBTAIN A GOOD RESULT, WE ADVISE TO FOLLOW ALL GIVEN INSTRUCTIONS CAREFULLY.



We recommend to order all panels for the same flooring project at the same time.

1

Always store and transport your Livyn floor carefully to prevent distortions. Store and transport the boxes on a flat surface in neat stacks. Never store the boxes upright or in moist, dusty rooms or places with extreme temperatures. Your Livyn floor must be acclimatized in the room of installation between 15-25°C for a period of at least 48 hours before installation. The temperature needs to be maintained prior to, during and for at least 24 hours after the installation is completed.

The type of subfloor, its quality and its preparation has a big influence on the final installation result. If the subfloor is not appropriate for the installation of your Livyn floor then necessary actions should be taken. Contact your Livyn floor dealer, who will be more than happy to help you. Be aware that unevennesses in the subfloor may leave marks in your Livyn floor.

2

Remove any damp-open or soft floor covering first (e.g. carpet, needle felt, cushion vinyl, etc.). Damp-sealed or hard floor covering (ceramic tiles, PVC, linoleum, VCT, laminate, etc.) does not have to be removed.

3

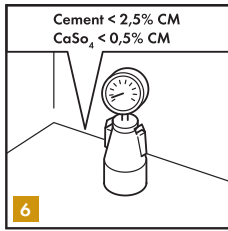
In case of installation on a wooden subfloor, please remove any existing floor covering first. No signs of mould and/or insect infestations should be present. Make sure the subfloor is level and nail down any loose parts. Apply a level floor or levelling compound on top for a perfect subfloor preparation. The crawl space under the plank floor must be sufficiently ventilated. Remove any obstacles and make sure there is sufficient ventilation (minimum 4 cm² total ventilation openings per m² of floor). The moisture content of the wood must not exceed 14%.

4

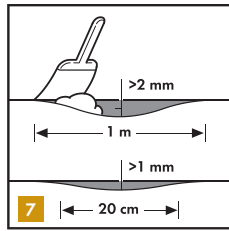
Floor heating can be used with your Livyn floor up to a maximum contact temperature of 28°C. Switch off your floor heating 24h before and after installation. For a good preparation, read also the separate installation instructions for floor heating on www.quick-step.com.

5

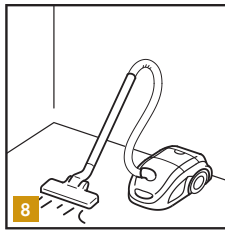
Make sure the subfloor is completely flat. Cement joints of more than 1 mm in depth should be levelled out using an appropriate levelling compound.



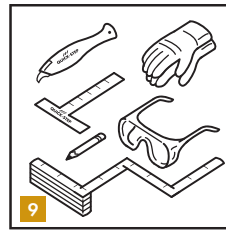
6



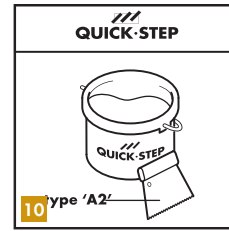
7



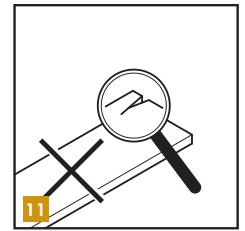
8



9



10



11

6

The moisture content of the subfloor must be less than 2,5% CM (cement screed) or less than 0,5% CM (anhydrite subfloor). In the case of floorheating, results must be respectively 1,5% CM and 0,3% CM. Always measure, record and keep your moisture content results.

7

Any unevenness of more than 1 mm over a length of 20 cm must be levelled out. The same applies to unevennesses of more than 2 mm over a length of 1 m. Use an appropriate levelling compound and check if a primer or sealer is needed.

8

Make sure that the subfloor is dry, flat, stable, clean and free from grease and chemical substances. If needed, scrape off and clean up old adhesives. Prior to installation, carefully remove all debris (including nails), sweep and vacuum. Repair major surface imperfections and large cracks. It is recommended to remove old skirtings and to install new ones after the installation of the floor.

9

The following standard tools are needed: measurer, safety glasses, gloves and a thin rope or pencil. In addition to the standard tools, we recommend to use the Quick-Step Livyn vinyl cutter knife and installation tool.

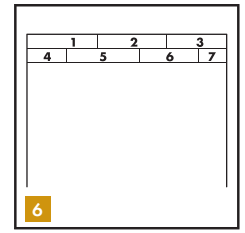
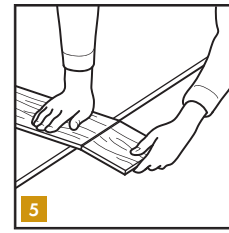
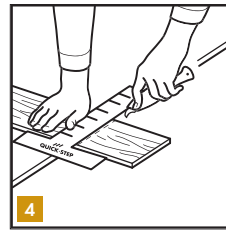
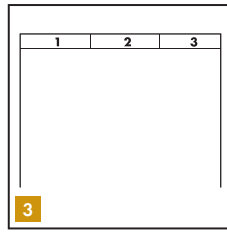
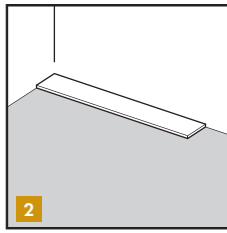
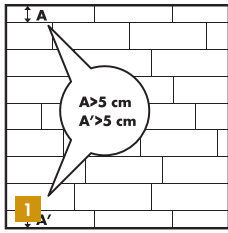
10

Use an A2 glue trowel to glue to ensures an even and correct distribution of vinyl glue over the base floor.

The use of all accessories other than the Quick-Step branded accessories may cause damage to your Livyn floor. In such case the guarantee provided by Unilin will be void. For this reason we advise to use only Quick-Step vinyl accessories, which have been specially designed and tested for use with your Livyn floor. Never use a tapping block during the installation of your Livyn floor.

11

Check all panels before and during installation in optimal light conditions. Defective panels must never be used.



During installation, make sure that you mix up the floor panels sufficiently so that there are not too many identical, lighter or darker panels next to each other. To obtain the best visual effect, it is best to fit the panels in the direction of the longest wall and parallel to the incidence of light.

1

Measure the room before you start fitting. Make sure that the last row of panels is at least 5 cm wide when finishing the installation.

2

We recommend to dry fit (without glue) first. Start the first row with a whole plank in length.

3

Dry fit now the first row completely.

4

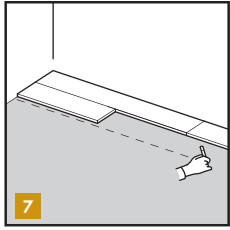
Your Livyn floor can easily be cut using a cutter or utility knife with the decor side face up. When cutting the vinyl plank, mark the line and use the knife to make a firm cut in the surface.

5

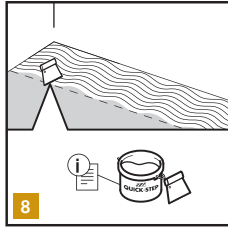
After cutting, break off the plank using both hands.

6

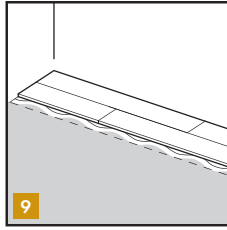
It is strongly recommended to stagger the rows by at least 30 cm so that the short edge seams are not in a straight uniform line. However you may want to try other patterns of planks to suit your taste. Make sure the first rows are on a perfect straight line. For instance, it is possible that your starting wall has a slight angle. You can check this by holding a thin rope and adjust the straightness of your floor where necessary.



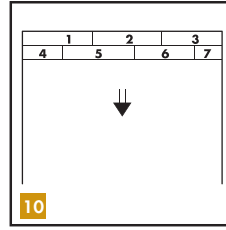
7



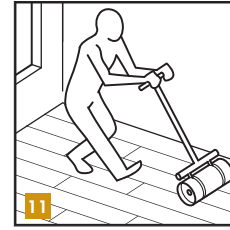
8



9



10



11

7

Draw a line along the first two dry fitted rows. This line marks to which point the glue should be applied.

8

Remove the dry fitted panels. Apply the vinyl glue on the floor for about the same width as the two first rows. Always take into account the instructions of the vinyl glue. We recommend to use the specifically developed Quick-Step Livyn vinyl glue.

9

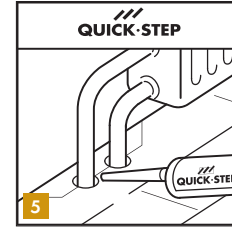
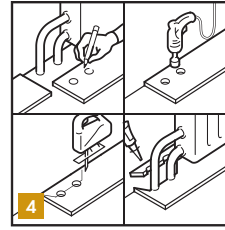
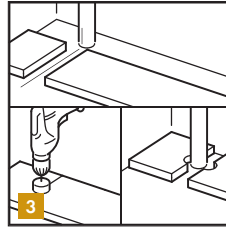
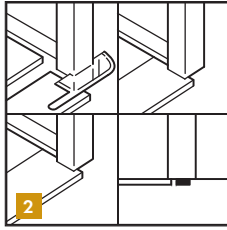
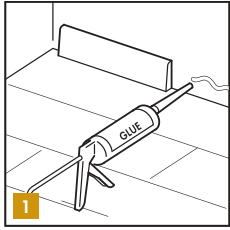
Install the first two rows following the starting line. Place the planks into the adhesive and push or roll down to ensure good adhesive transfer. All glue residue should immediately be removed with a damp cloth. Never use detergents.

10

Use the same procedure to complete the rest of the room.

11

Use a heavy roll to ensure the best bonding and adhesive transfer. Wait no longer than 30 minutes before rolling on the installed area.



1

Inspect the final surface of the installed floor. Install skirtings against the wall but never attach the skirting to the floor itself. In places where profiles or skirtings cannot be placed, fill the expansion gaps with an elastic filler like the Quick-Step Kit. For rooms with a high moisture level like bathrooms, a waterproof filler can be used like the Quick-Step Hydrokit.

2

When the new flooring meets a threshold or a doorway, we recommend undercutting the moldings. To secure the right cut, turn a plank upside down and place it on the floor up to the door frame. Then place the vinyl hand saw flat against the plank and simply cut through the frame. Remove the cut out and vacuum away debris. You can now simply install the plank at the side of the undercutted molding.

3

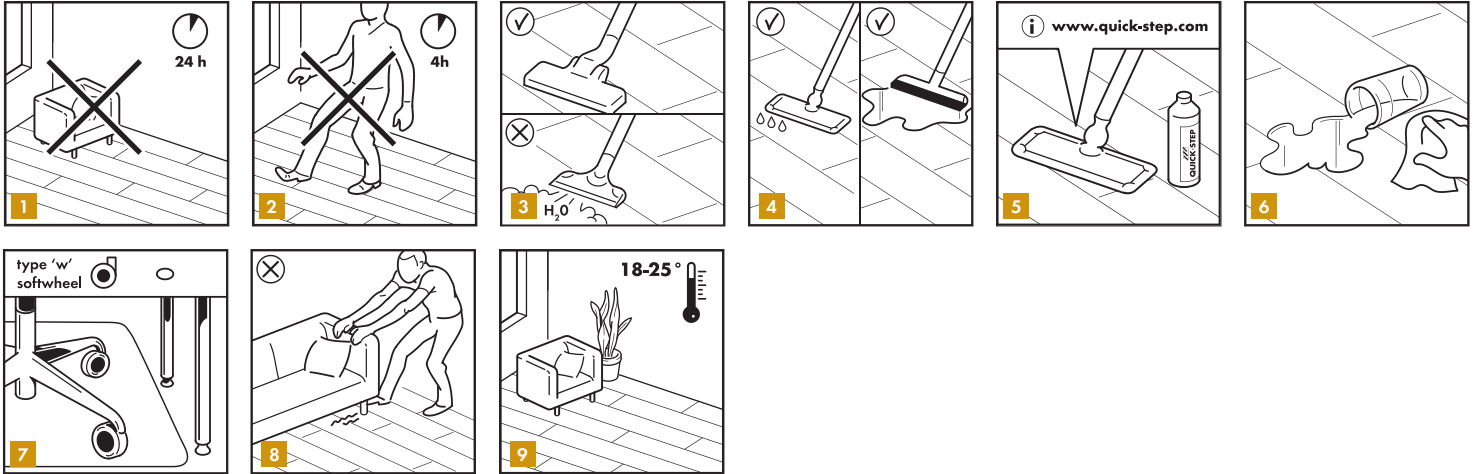
In rows where there is a pipe, make sure the pipe falls exactly in line with the short side of two panels. Take a drill bit with the same diameter as the pipe. Lay the panels together and drill a hole centered on the joint between the two panels. Now you can install the panels.

4

In case of a double pipe, drill a hole at each of the marked points that is equivalent to the diameter of the pipes.

5

If located on the long side of the plank, make a 45 degree cut from each hole to the edge of the plank. Then, using an appropriate glue along the cut edges of the piece you cut out, glue the piece in place.



1

The glue must be able to cure 100% before moving in furniture. Hence, leave the floor untouched for 24 hours after installation between 18-25°C for the curing process to complete.

2

You cannot immediately walk on your new Livyn floor after installation. Wait at least 4h before doing so.

3

It is allowed to use a vacuumcleaner. The use of a steamcleaner is forbidden.

4

Wipe the floor with a damp or wet mop or cloth.

5

Quick-Step Livyn Clean is a maintenance product specifically developed to keep your new vinyl floor in top condition. For further information on how to clean and maintain your floor, please visit www.quick-step.com. For specific cleaning instructions in commercial applications or projects, you can contact the Quick-Step technical department.

6

Always remove spilled liquids from the floor.

7

Protect furniture and chair legs. Use (office) chairs and seats with soft wheels that are suitable for a vinyl floor and/or use a suitable desk mat.

8

Never drag heavy items of furniture over the floor but lift them up. Make sure furniture legs have a large surface and are provided with non-staining floor protectors. The taller and/or wider the furniture feet are, the greater the repartition of weight will be on the floor and the less chance there is to damage the floor.

9

Ensure that the indoor climate conditions are always kept between 15-25°C. It is also important to keep the subfloor in the above mentioned temperature range.

Place non-rubber backed mats at all outside entrances to prevent dirt, grit and soil from being tracked onto your floor. This will reduce damages, the maintenance requirement and extend the life of your floor. Please note that prolonged contact with rubber can cause a permanent stain.

Do not allow cigarettes, matches or other very hot items to contact the floor as this may cause permanent damage.