

# Installation, Cleaning and Maintenance instructions

## 14,5mm / 15mm multi layer wood flooring with glue less WICLOC connection

### GENERAL INFORMATION

Please read these instructions thoroughly in conjunction with relevant country standards before starting the installation.

#### 1. Transport, storage and acclimatization:

Transport and store the cartons in laying position. Store the planks at room temperature for at least 48 hours, still in their packaging, prior to commencing work. Do not remove the plastic wrapping from the packaging until ready to install the floor. The room temperature must be at least 18°C (65°F) before and during installation.

#### 2. Inspection:

Prior to installation, please inspect the planks in daylight for any visible faults or damage, and also check if the subfloor and site conditions are in accordance with the specifications described within these instructions. If you are not satisfied do not install, and contact your supplier. Amorim cannot be held responsible for claims associated with improper subfloors or applications, or the use of any auxiliary products that are not recommended.

#### 3. Subfloor requirements:

General: This WICANDERS wood flooring can be installed on top of most hard surfaces such as resilient floor coverings, wood flooring and ceramic tiles. Soft subfloors such as carpets and similar must be removed. The subfloor must be even, flat, dry and variations should not exceed 3mm in 2m (0.12" in 6.6 feet).

All types of concrete, wooden and ceramic surfaces must be completely dry (for concrete screeds < 2,0%; for anhydrite screeds < 0,5% when using a CM measuring instrument).

Moisture protection: All types of concrete subfloors require insulation against moisture. This includes types with built-in moisture barrier, ceramic, heated and covered with resilient floors. Use a PE moisture barrier film with a minimum thickness of 0,2mm (0.008"). On ground and basement subfloors we recommend to lay 2 layers crossways for better moisture protection.

Heated subfloors: Please read the information about multi layer parquet on heated subfloors on our website [www.wicanders.com](http://www.wicanders.com). For further information, follow the instructions supplied by the subfloor heating system manufacturer / contractor or contact your supplier.

#### 4. Installation recommendations:

Measure the room accurately, at right angle to the direction of the planks. The planks in the final row should be at least 5cm wide. If necessary, the planks in the first row can be cut to smaller size. This WICANDERS wood flooring is a natural product and each individual plank has its own shade and pattern. Therefore, shuffle the planks in order to obtain the most pleasant blend of shades. Lay the planks preferably following the direction of the main source of light. We recommend to lay WICANDERS Parquet on wooden floors crossways to the existing floorboards.



AMORIM

Excellence in flooring



WICANDERS®

# Installation, Cleaning and Maintenance instructions

## 14,5mm / 15mm multi layer wood flooring with glue less WICLOC connection

### 5. Expansion gaps:

This WICANDERS Parquet is installed as a "floating floor". The planks should not be fixed to the subfloor. The skirting boards must not be pressed down, restricting the movement of the floor. Also provide a 10mm expansion gaps to the walls and other fixed objects. Floor areas superior to 100m<sup>2</sup> (900 sq. ft), or with dimensions greater than 10m (30 feet) in either direction, transitions between two rooms and asymmetrical floor areas require extra expansion gaps.

### 6. Preventive care:

If works will take place in the room where the floor is installed, protect with craft paper, plywood or hardboard. Do not drag furniture across the floor. Use felt pads on chair and furniture legs. Office roller chairs must comply with DIN68131. Place quality walk-off mats at all entrances to retain tracked in dirt, grit and moisture. Never use latex or rubber backed mats as they can permanently stain the floor. Avoid moisture on the floor. Ideal and healthy room conditions of 40 – 60% R.H. at 20°C (68°F) must be kept at all times. When using intensive room heating, the indoor air humidity may drop so low that the floor is prone to dry out. As wood is a natural material, this may cause shrinkage of the planks that will result in minor gaps in the flooring joints. Use an air humidifier to prevent this.

### 7. Cleaning and maintenance:

For daily cleaning use a vacuum cleaner or a damp cloth. From time to time the floor should be treated with customary wooden flooring maintenance products. For correct use follow the instructions on the packaging labels of each product. Only use a well wrung out cloth. Always wipe dry immediately until no more moisture is visible on the floor. Wet maintenance is absolutely forbidden! Never use any scouring products!

## INSTALLATION

Please read the General Information section before starting the installation.

### *Tools and materials required:*

Jigsaw or a fine toothed handsaw, spacer blocks, pencil, set square, 0,2mm PE film, adhesive tape.

### *Moisture protection:*

Lay the PE film, allowing for at least 20cm (8") overlapping and tape. Turn the film upward 5cm along the walls. Trim after the skirting boards are fixed.

### *First three rows:*

1 Start lying in the right-hand corner. Turn the tongue side of the plank facing the wall. Maintain a gap of 10mm on the short side. Adjust the lengthways gap from the wall once three rows of planks have been laid.



AMORIM

Excellence in flooring



WICANDERS®

# Installation, Cleaning and Maintenance instructions

## 14,5mm / 15mm multi layer wood flooring with glue less WICLOC connection

2 Hold the next plank at an angle (approx. 30-35°) against the first one and lay it flat on the floor. Complete the first row in the same way.

3 Cut the final plank of the first row to the correct length. Start the next row with the piece leftover (must be at least 300mm long). Always ensure that the end joints are staggered at least 300mm.

4 Place the first plank of the new row with the tongue side at an angle (approx. 30-35°) against the groove side of the plank in the previous row. Press forward and lay it flat at the same time.

5 Place the short end of the floorboard at an angle (approx. 30-35°) against the previously installed floorboard and fold down. Ensure that the board is positioned on the integral locking strip of the floorboard in the previous row.

6 Lift floorboard (together with the previous laid in the same row) up slightly (about 30mm), push it against the row in front and then lay it down.

7 Adjust the distance to the wall to 10mm when three rows are completed. Precede the installation as described above until reaching the opposite wall.

*Last row:*

8 Measure and cut the planks in the last row to size. Allow for 10mm distance to the wall.

*Door frames:*

9 Use a piece of plank to obtain the correct height. Saw door frame to required height allowing for 2mm of space to the planks.

*Heating pipes:*

10 Drill required holes in the planks. The holes should be 20mm wider in diameter than the pipe. Saw as shown in picture no. 10. Glue sawn piece back into place. Cover the hole with a pipe sleeve.



AMORIM

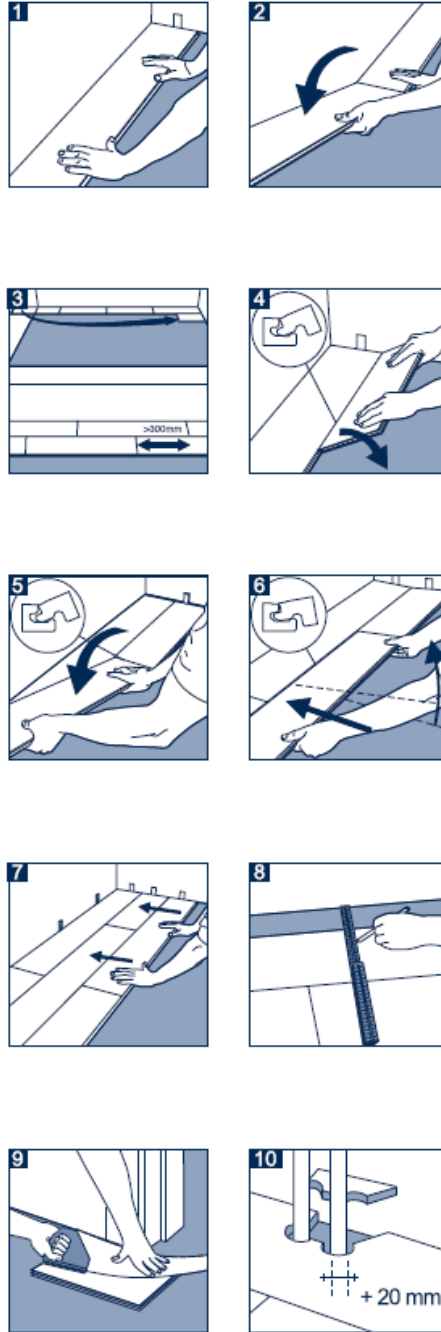
Excellence in flooring



WICANDERS®

# Installation, Cleaning and Maintenance instructions

14,5mm / 15mm multi layer wood flooring with glue less WICLOC connection



AMORIM

Excellence in flooring



WICANDERS®